



Getting started with Eclipse™

Version 1.0 for Voyager 8.0

Table of Contents

Introduction	4
Overview.....	4
Preface.....	4
Technical Requirements	4
Contacting Technical Support	4
Project set up.....	5
Setting Eclipse variables.....	5
Importing the project.....	12
Running your first example.....	15

<This page intentionally left blank>

Introduction

Overview

An Eclipse™¹ project has been created to aid Eclipse users in getting started with the Voyager examples. All examples without third-party dependencies outside of Java™² are included in the Eclipse build by default. Please follow this guide step-by-step.

Preface

The purpose of this guide is to get Eclipse users quickly started using Voyager. It assumes knowledge of both Eclipse and Java.

This preface covers the following topics:

- Technical requirements
- Contacting technical support

Technical Requirements

Before following the steps of this guide, make sure that you have the following software available on your computer:

- A Java Development Kit (JDK™³), version 5 or higher.
- Eclipse 3.2 or higher.

Contacting Technical Support

Recursion Software welcomes your problem reports, and appreciates all comments and suggestions for improving Voyager. Please send all feedback to the Recursion Software Technical Support department.

Technical support for Voyager is available via the web, email, and phone. You can contact Technical Support by sending email to psupport@recursionsw.com or by calling (972) 731-8800.

¹ Eclipse is a trademark of the Eclipse Foundation, Inc

² Java is a trademark of Sun Microsystems, Inc.

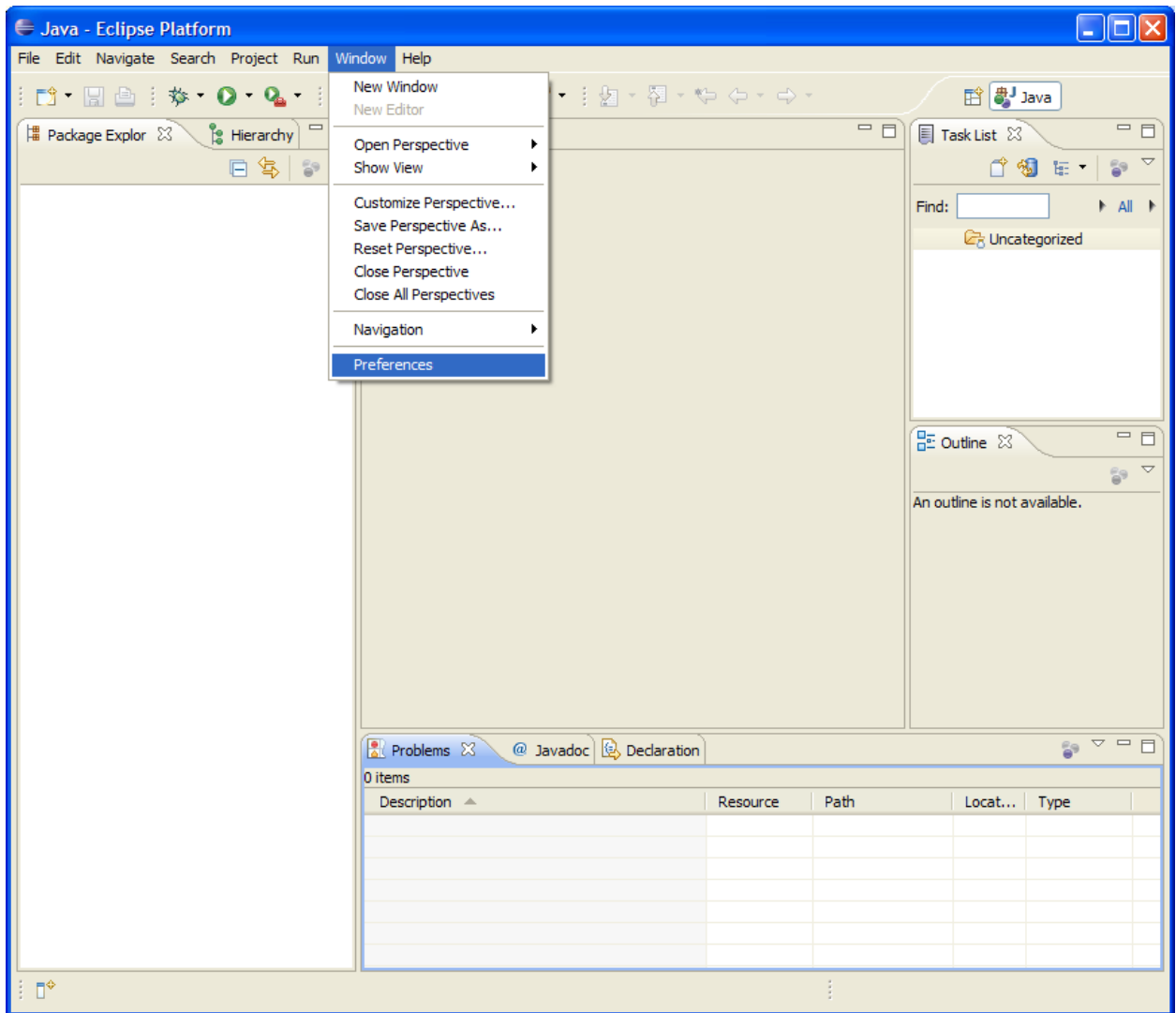
³ JDK is a trademark of Sun Microsystems, Inc.

Project set up

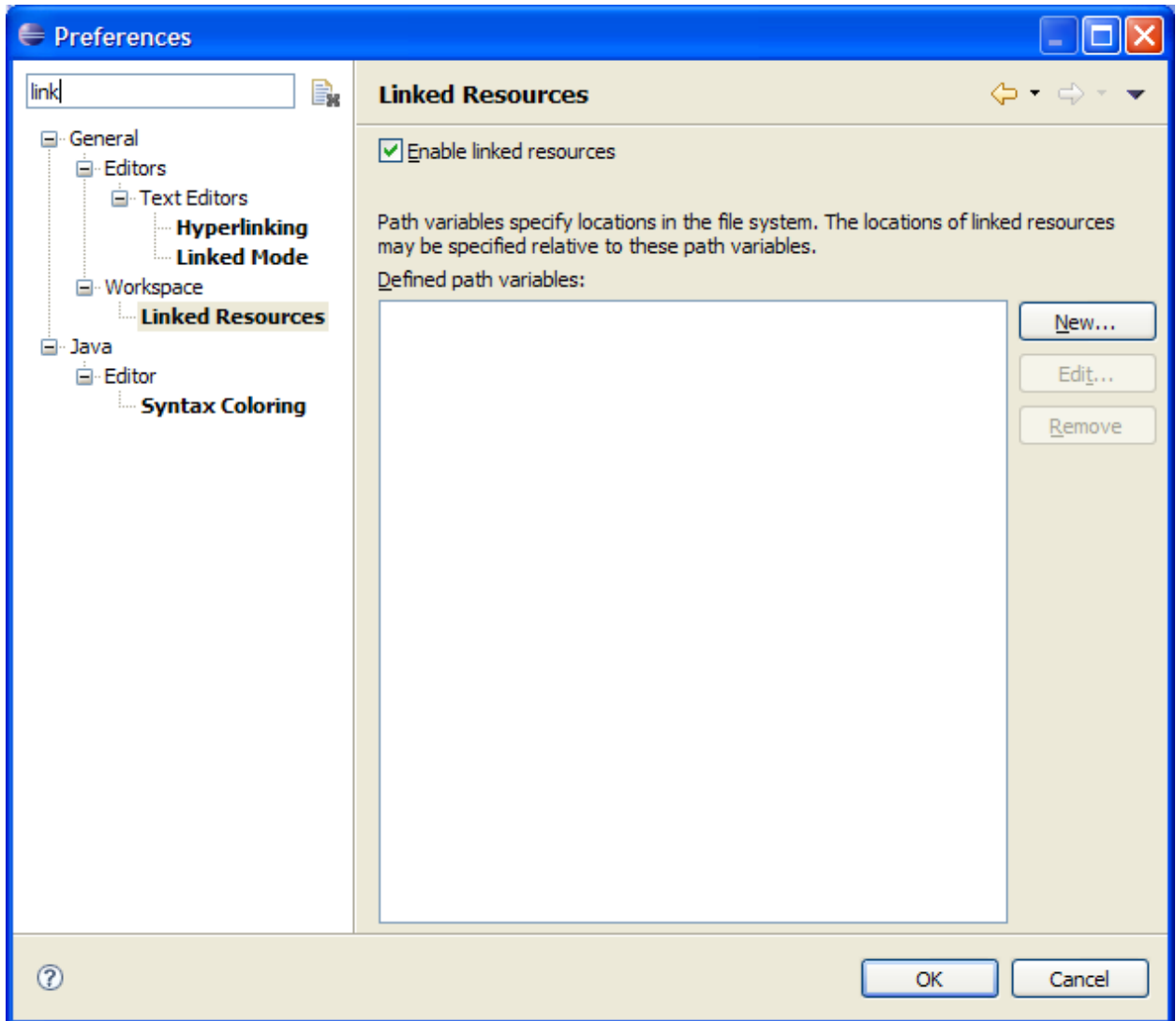
Setting Eclipse variables

Open %VOYAGER_HOME%\examples\java\se-cdc\eclipse_project as your workspace (e.g., C:\Program Files\RSI\Voyager\examples\java\se-cdc\eclipse_project or /opt/RSI/Voyager/examples/java/se-cdc/eclipse_project).

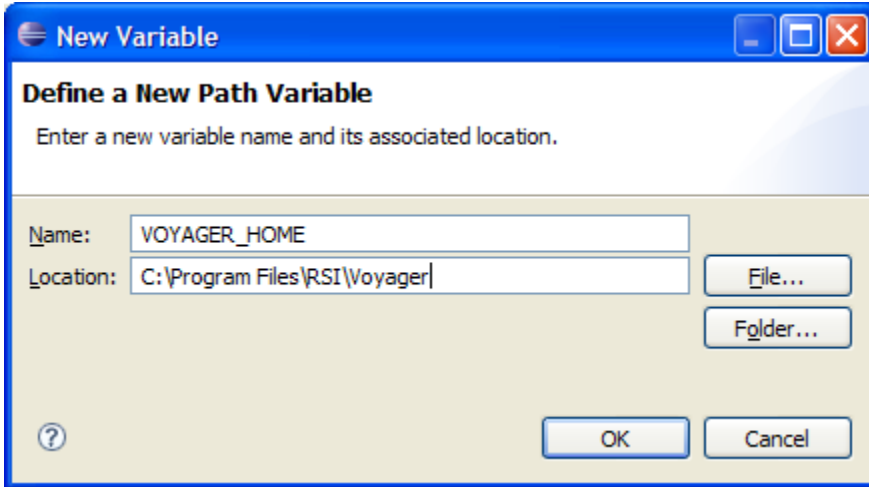
Select **Window->Preferences**.

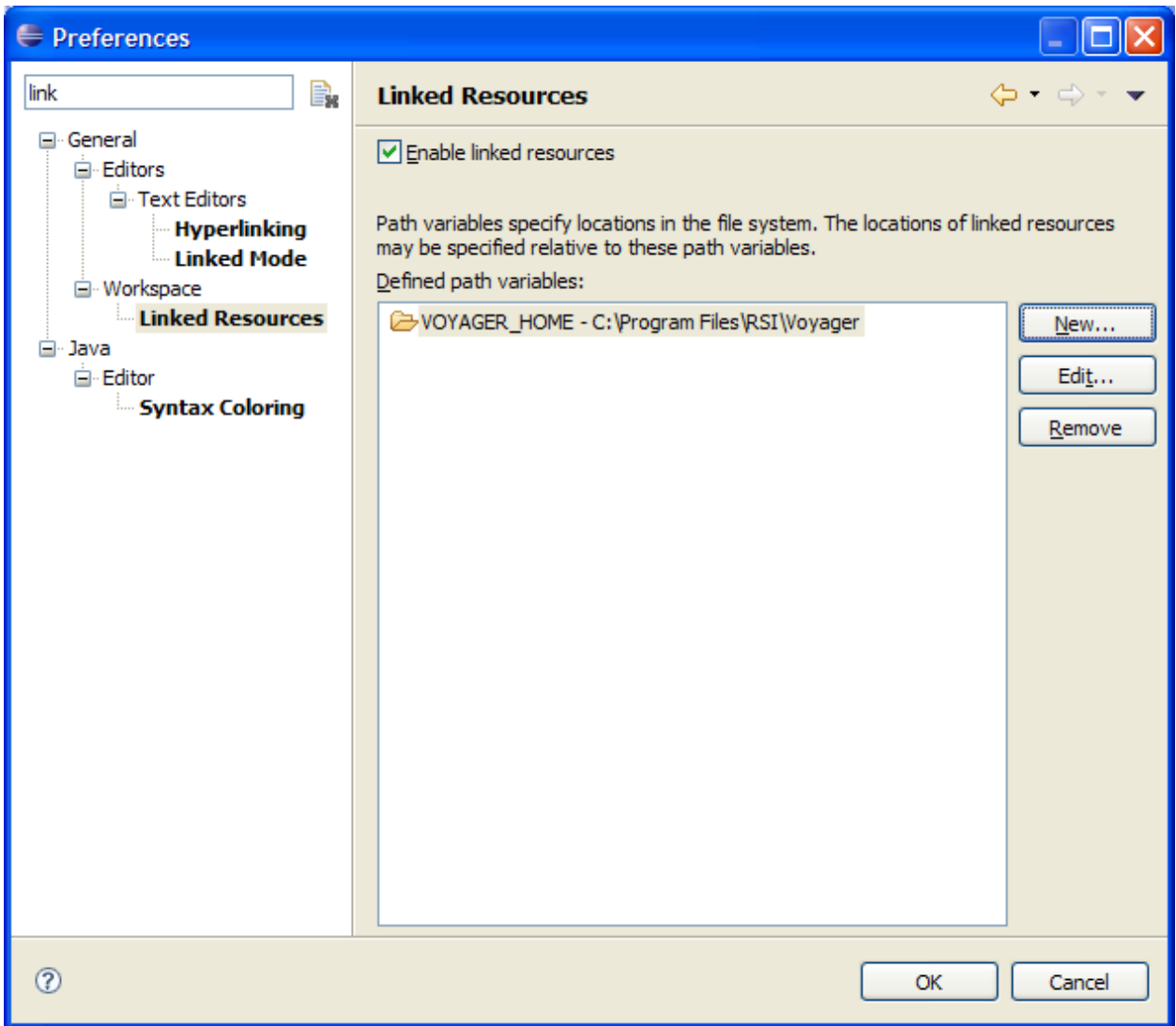


Select the **General->Workspace->Linked Resources** node. Make sure that “**Enable linked resources**” is checked, and click on the button labeled “**New...**”

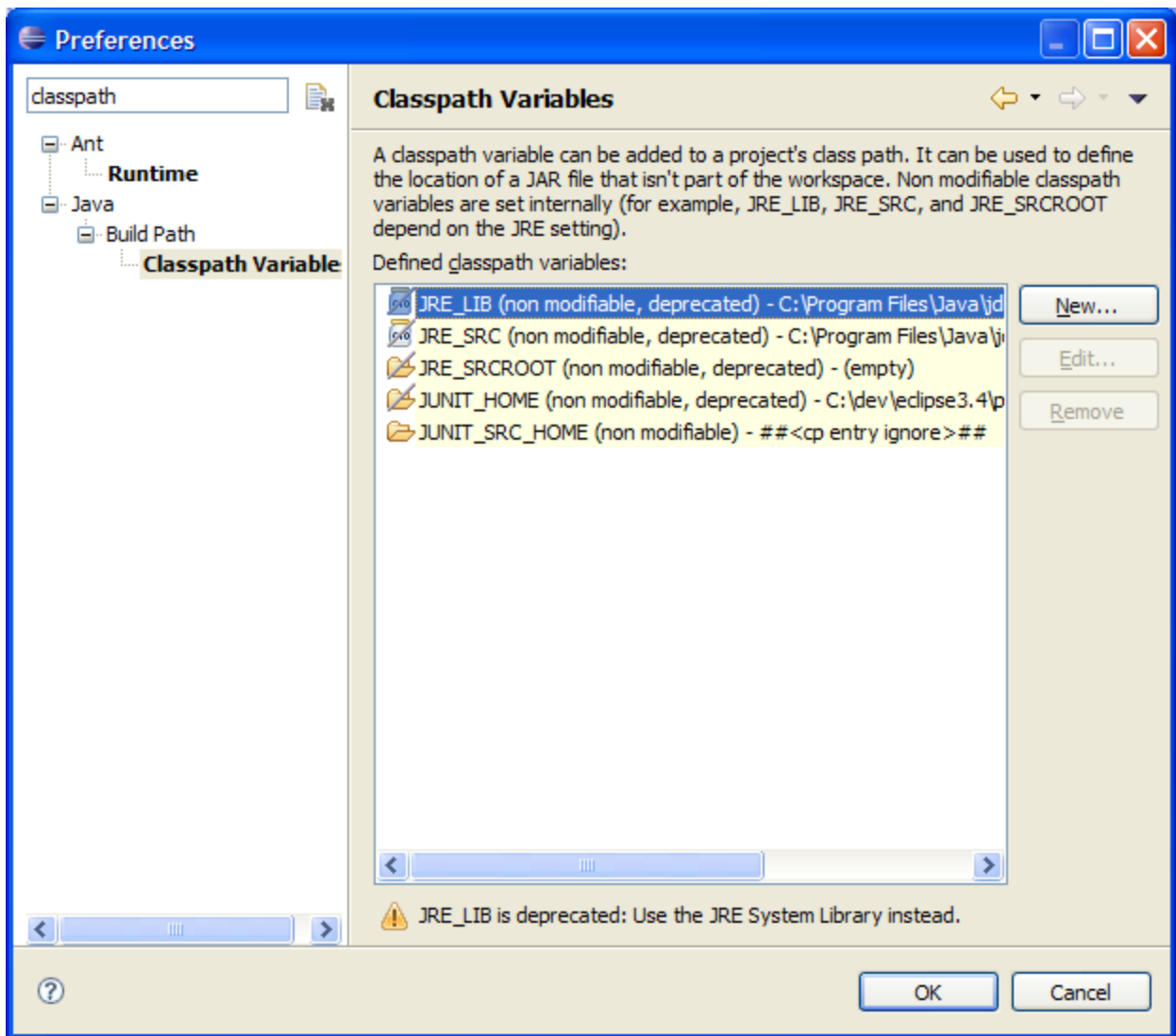


In the prompt window, enter `VOYAGER_HOME` in the text field next to the “**Name:**” label and the value of `%VOYAGER_HOME%` (the root of the Voyager install, for example, `C:\Program Files\RSI\Voyager`) in the field next to the “**Location:**” label. Click the “**OK**” button on the prompt window to confirm the change (do not close the Preferences window yet).

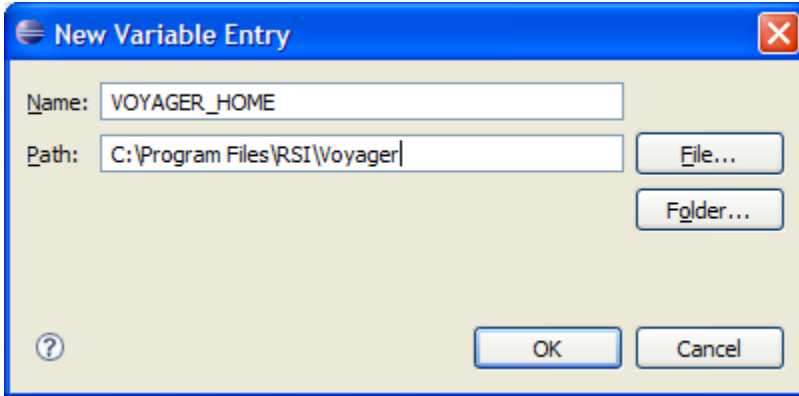


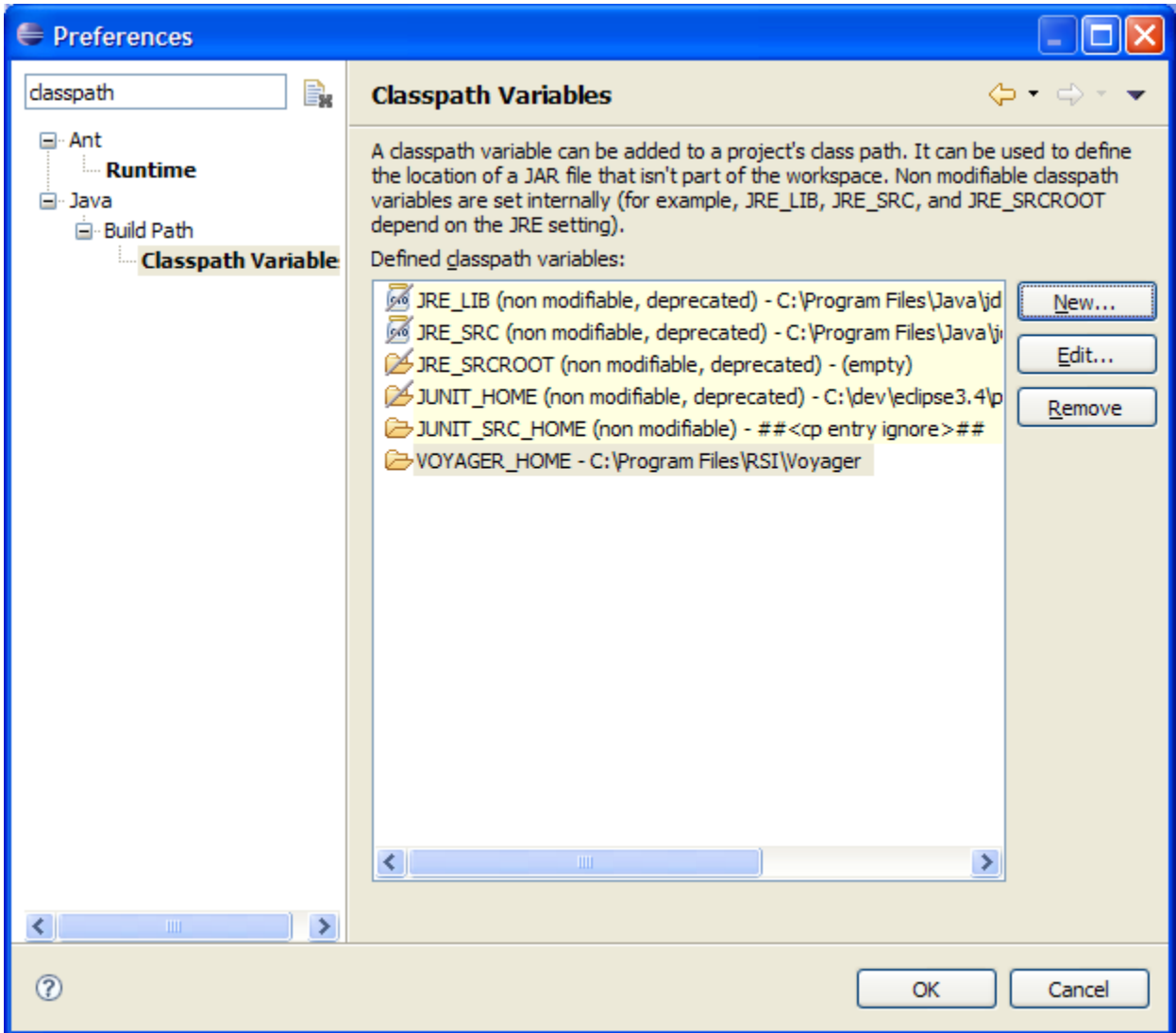


Repeat the above process for the classpath. Select the **Java->Build Path->Classpath Variables** node. Click on the button labeled “New...”



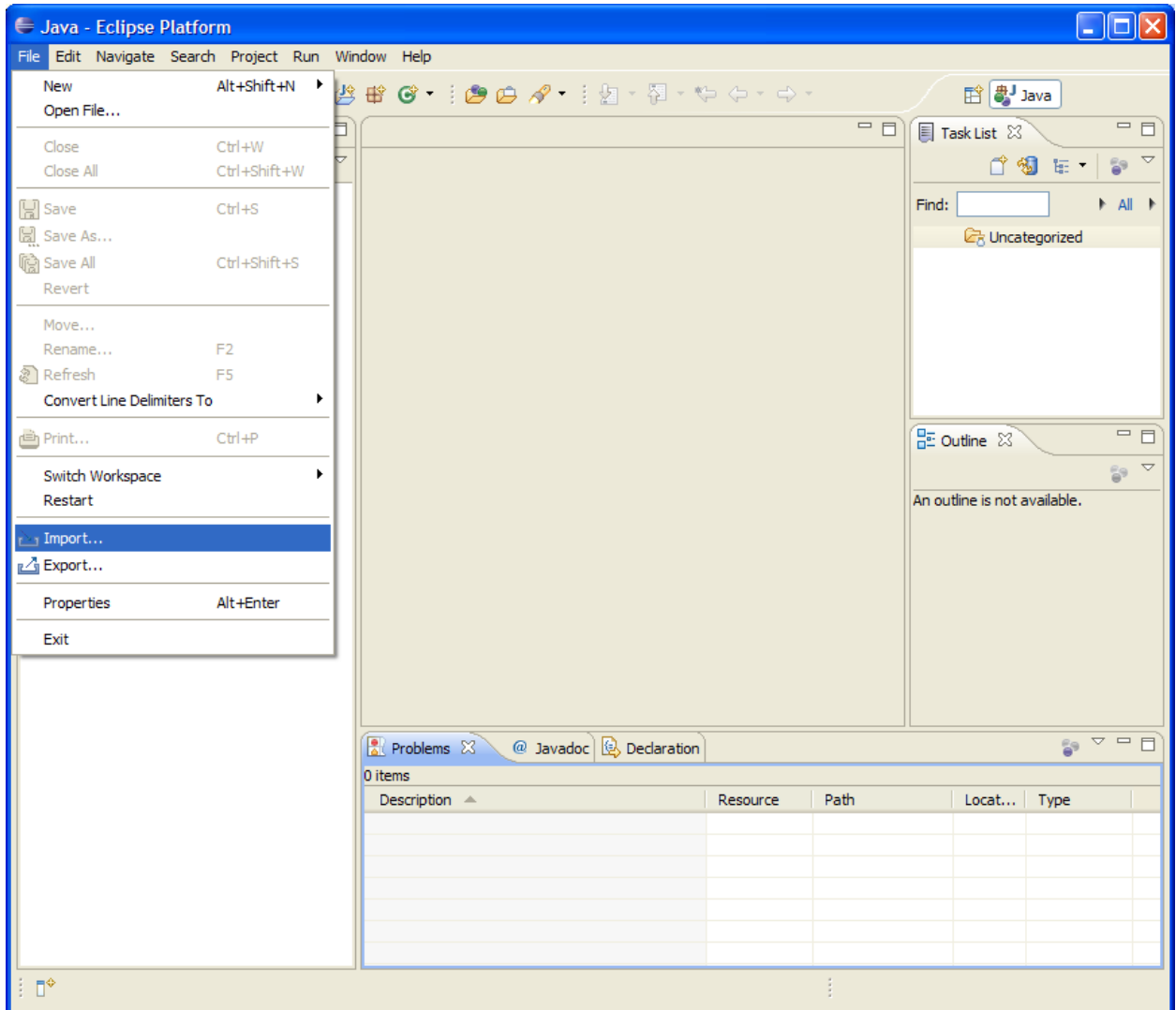
For the text field labeled “**Name:**” enter VOYAGER_HOME. For the text field labeled “**Path:**” enter the same value of %VOYAGER_HOME% entered above (e.g., C:\Program Files\RSI\Voyager). Click the “**OK**” button on the prompt window to confirm the change and then click the “**OK**” button on the Preferences window to exit Preferences.



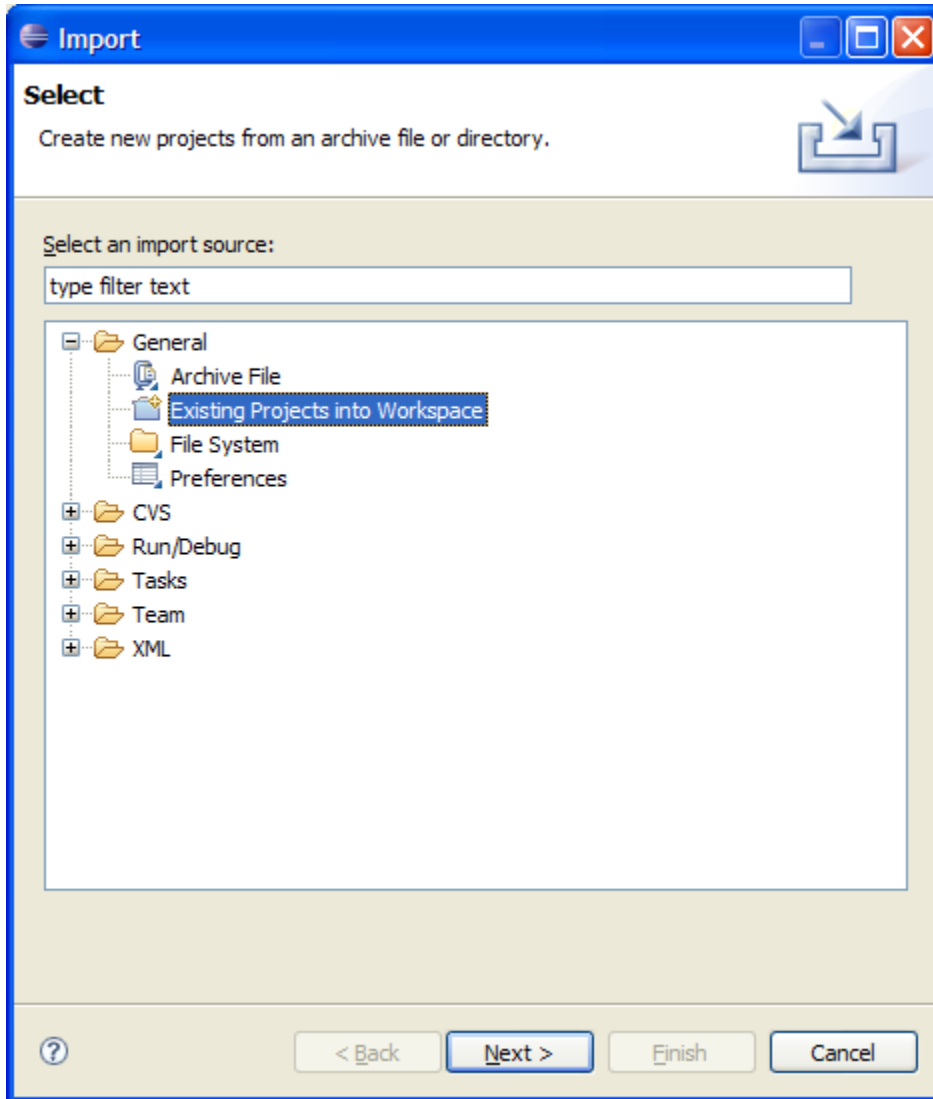


Importing the project

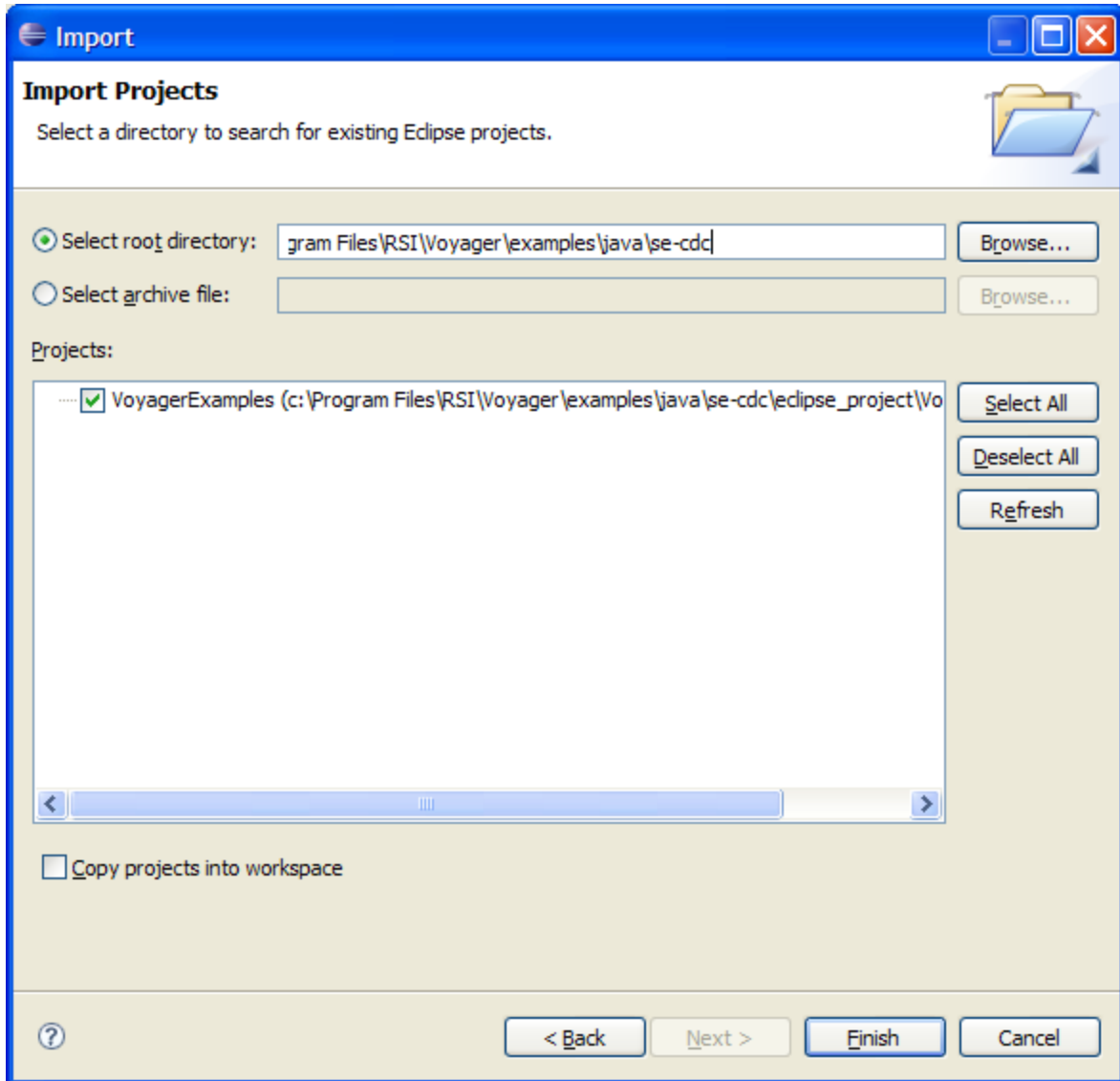
From the “File” menu, select “Import...”



Select the **General -> Existing Projects into Workspace** node and click the “**Next >**” button.



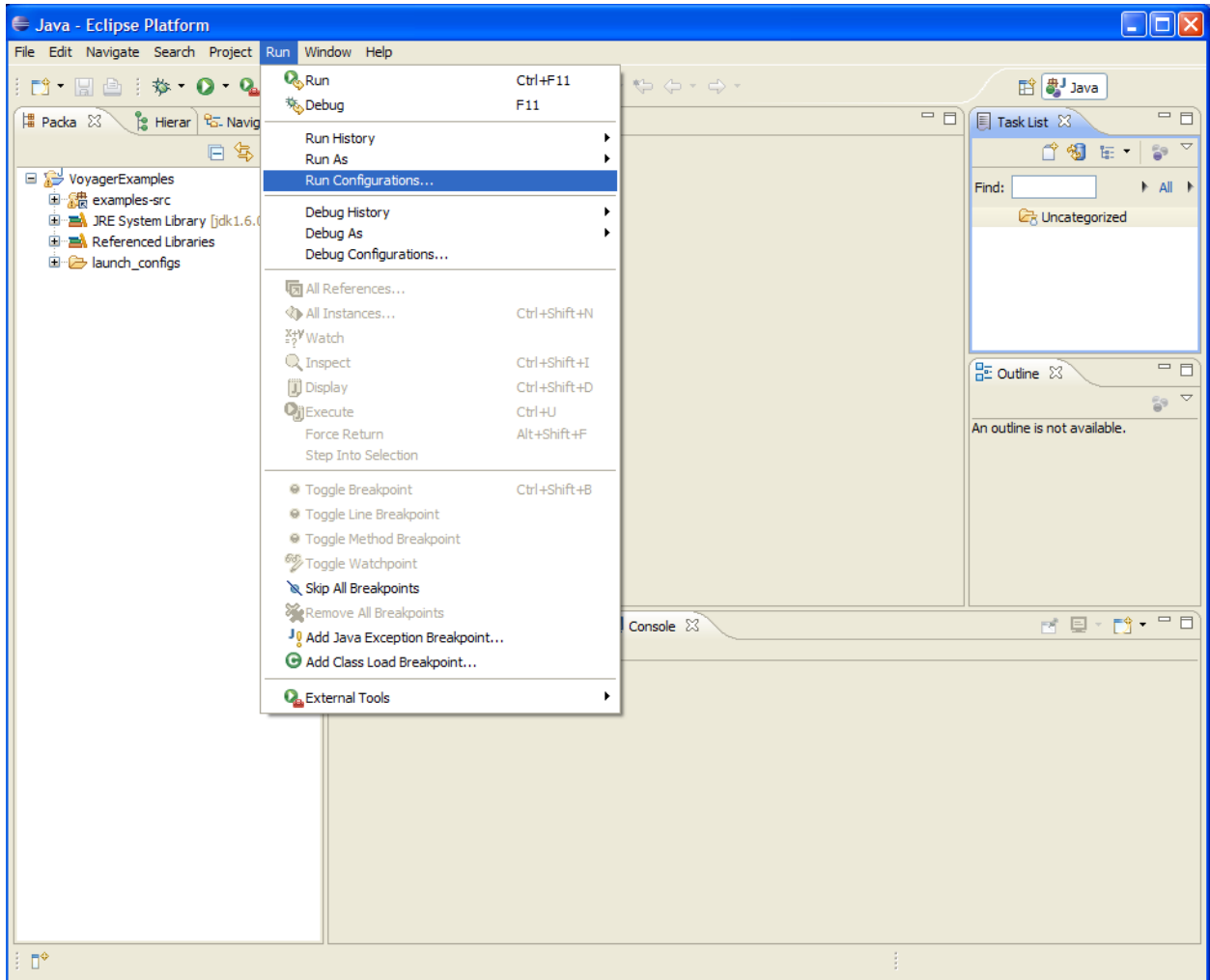
Browse to the %VOYAGER_HOME%\examples\java\se-cdc\eclipse_project directory (e.g., C:\Program Files\RSI\Voyager\examples\java\se-cdc\eclipse_project). You should see VoyagerExamples in the “**Projects:**” list. Click the “**Finish**” button to import the project.



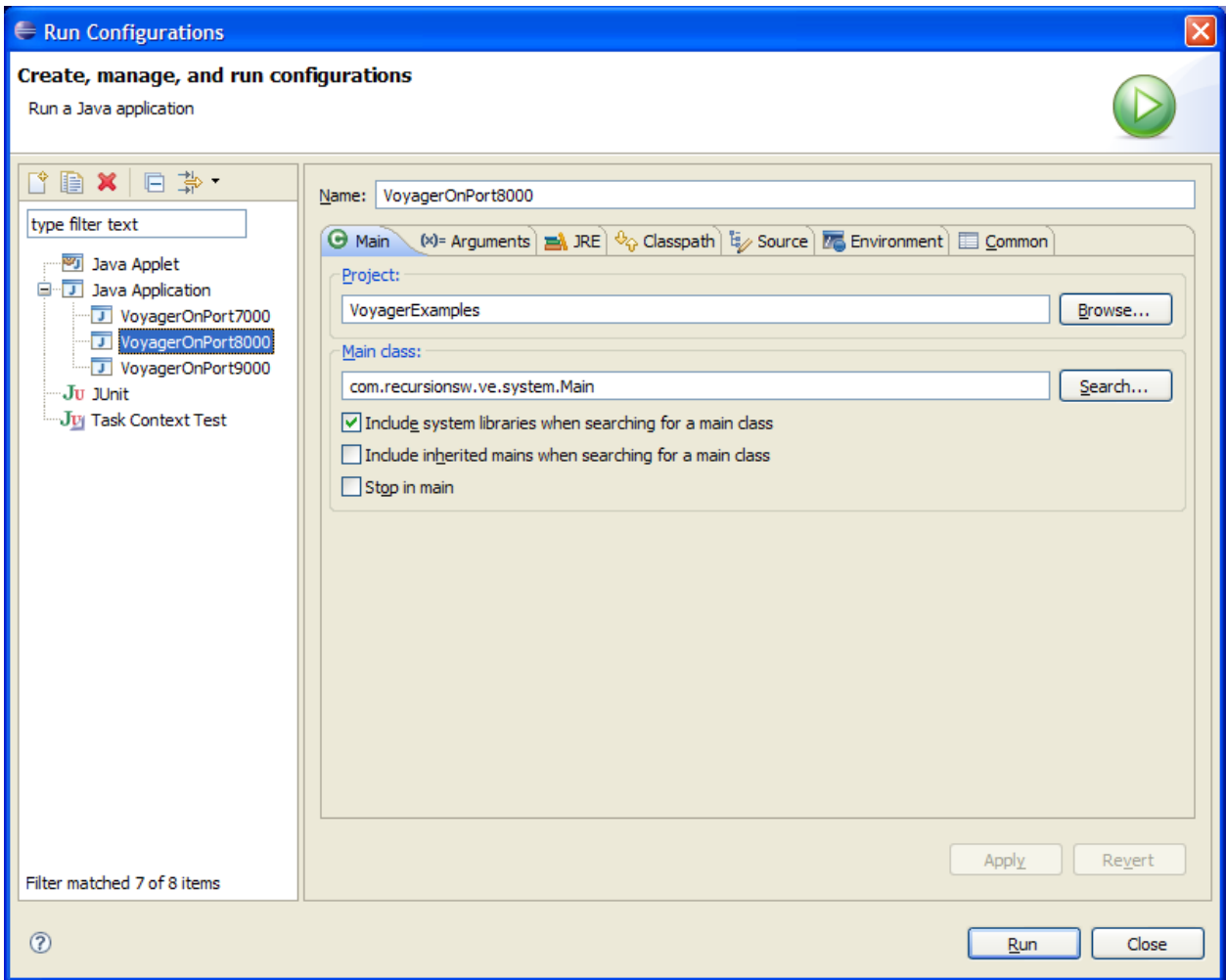
The examples project should build (examples with third-party dependencies such as messaging are excluded by default).

Running your first example

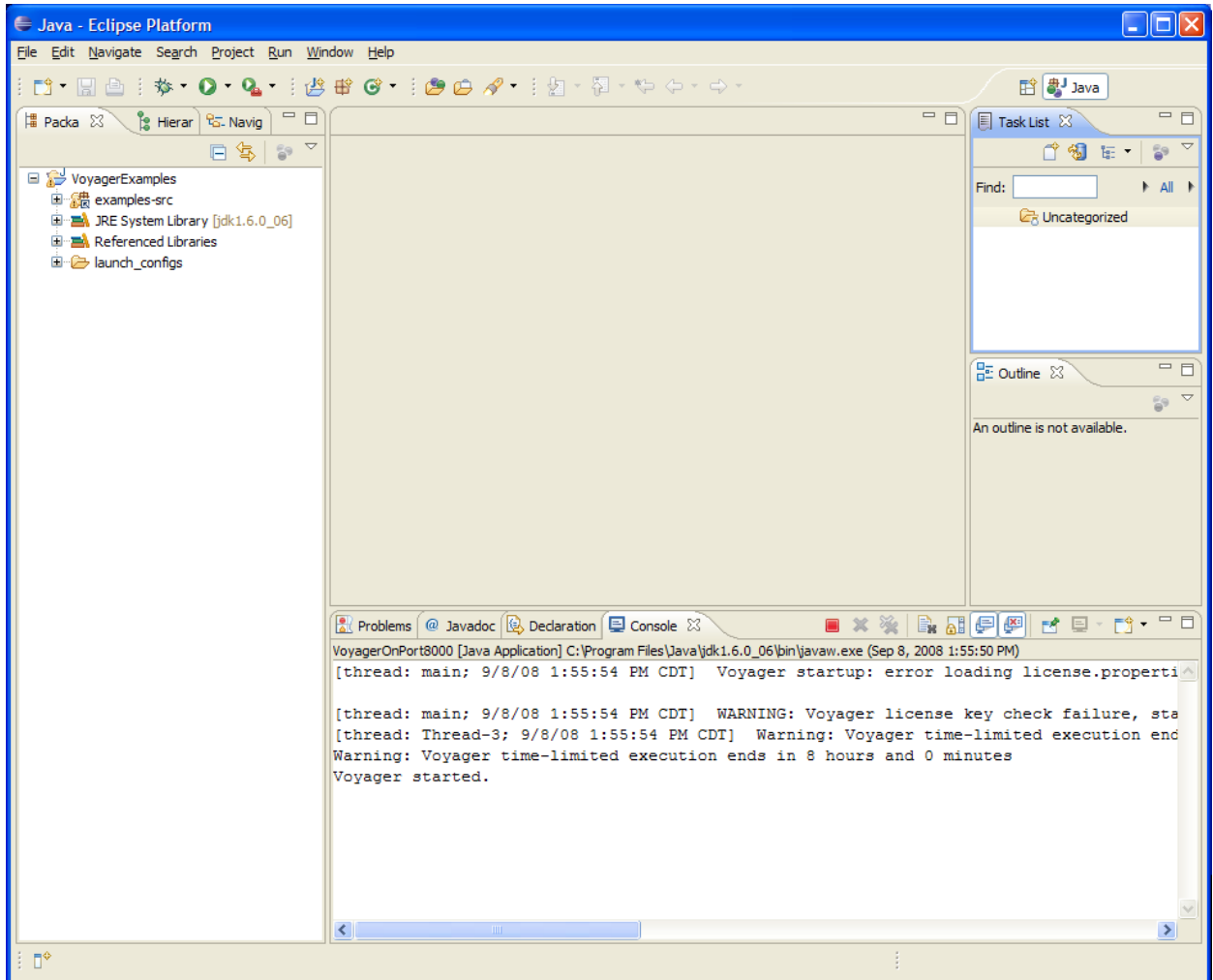
Predefined launch configurations for running Voyager are supplied with the Eclipse project. Select the **Run** menu, then the “**Run Configurations...**” option.



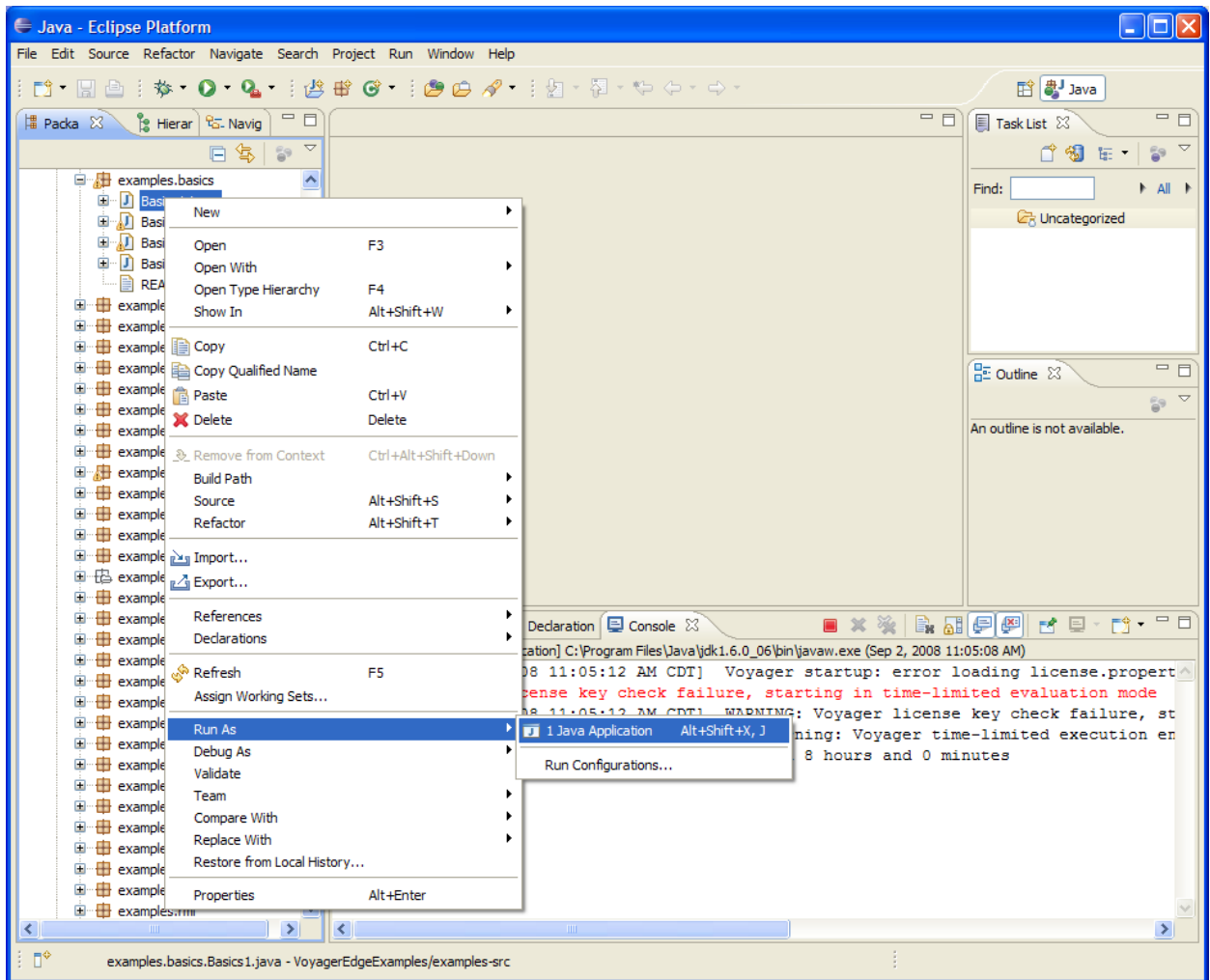
Select the **Java Application -> VoyagerOnPort8000** node and click “**Run**”.



You should see that Voyager starts up successfully (you will see a message regarding a license check failure until you add your `license.properties` file to the classpath).

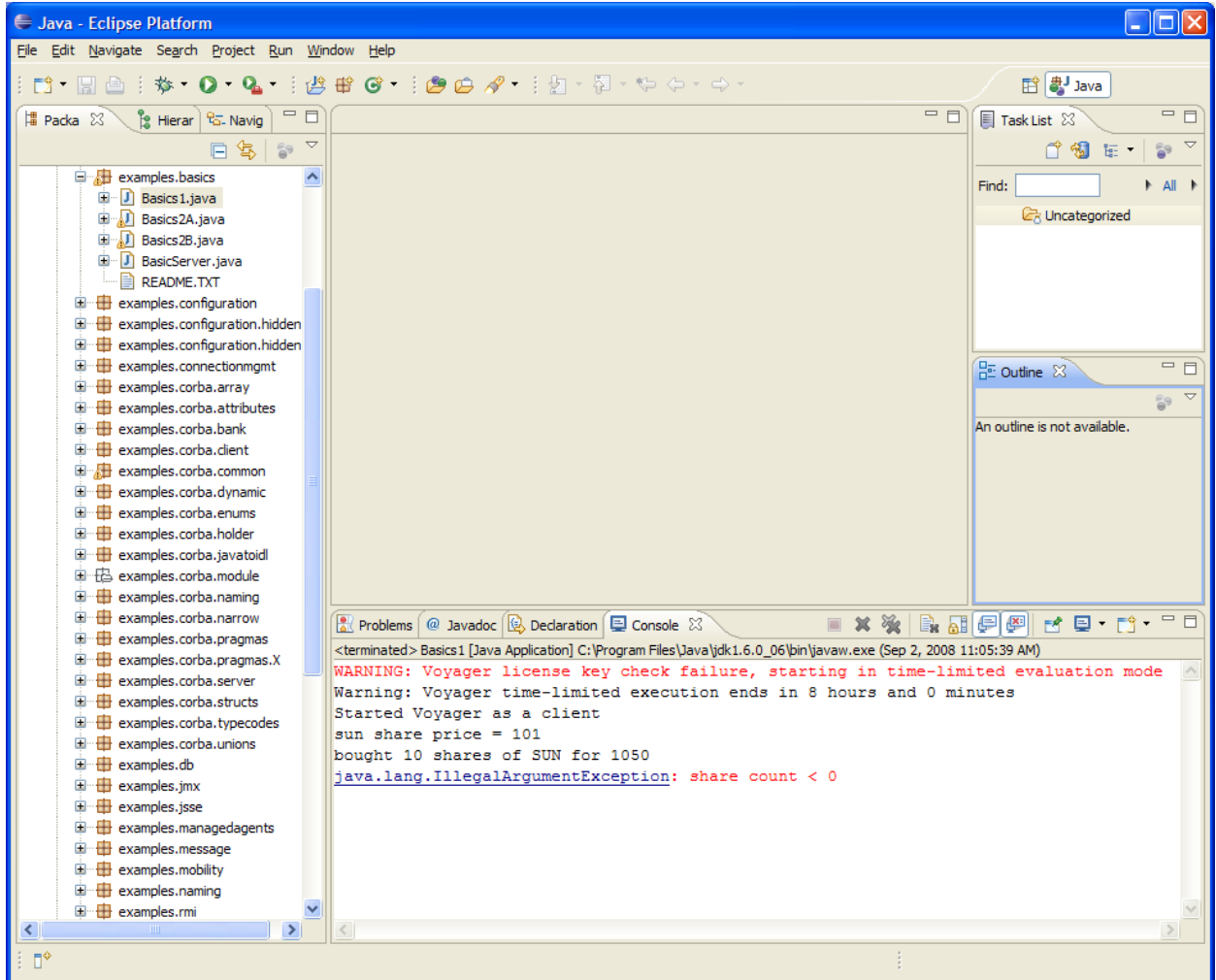


Now that Voyager is running on port 8000, you can run the Basics1 example. To run the Basics1 example, select `examples.basics.Basics1.java` from the Package Explorer. Then, using the right-click menu, select **Run As -> Java Application**.



You should see the following output in the console window:

```
Started Voyager as a client  
sun share price = 101  
bought 10 shares of SUN for 1050  
java.lang.IllegalArgumentException: share count < 0
```



Please refer to the user guide for more information on running other Voyager examples.